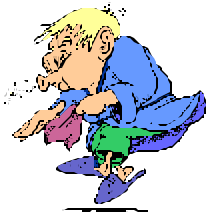


Keep Me Home I f...

I am
Vomiting!



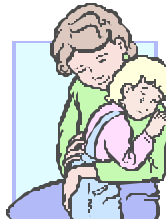
2 or more
times in 24
hours

I have a rash,
lice or nits!



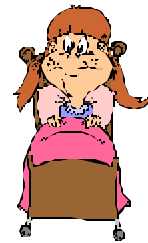
Body rash,
especially
with a fever

I have
diarrhea!



3 or more
watery
stools in 24
hours

I have an eye
infection!



Green mucus
or pus draining
from the eyes

I have a
sore throat!



With a fever
or swollen
glands

I have a fever and
really don't
feel good!



Temp of 100 (f) or more. AND/OR
sore throat, vomiting diarrhea, or just
not their normal self

WHEN YOUR CHILD IS SICK:

1. Have plans for back up childcare.
2. Let us know what is wrong with your child even if your child stays home!
3. Your child cannot return to child care until 24 hours after symptom free.

If your child becomes sick at child care we will call you to come pick up your child.